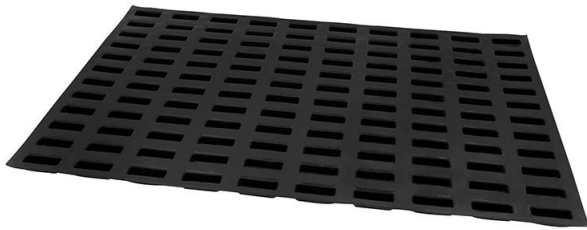




Flexipan mould tray 60x40 120 chocolate mini-ingots 4.5x1.5 cm

336175

PRODUCT SHEETMaterial(s):

Silicon

Country of origin:

FRANCE

Customs number:

3924100090

Brand:

MAISON DEMARLE



FLEXIPAN ORIGINE

PRODUCT DESCRIPTION

- ✓ Glass knit shape covered with several layers of silicone
- ✓ Advantages of the Flexipan system: flexibility, support and non-stick
- ✓ Easy to turn out without prior greasing
- ✓ Compatible with all types of oven
- ✓ Homogeneous cooking and colouring
- ✓ 2,000 to 3,000 bakes per mould depending on the article
- ✓ Easy to clean (soak in hot water after use)
- ✓ Plate format adapted to mass production
- ✓ Can be used for cooking and deep-freezing from -40° to +240°.

SALES DATASales unit:

1

MOQ:

1

PRODUCT FEATURES*Dimensions Commercial Variant*

	<i>Commercial version CV 1</i>	<i>Commercial version CV -1</i>	<i>Commercial version CV -2</i>
<u>Designation</u>	Flexipan mould tray 60x40 120 chocolate mini-ingots 4.5x1.5 cm		
<u>Contains</u>		VC-1	VC-2
<u>Height</u>	11 mm		
<u>Total Length</u>	600 mm		
<u>Width</u>	400 mm		
<u>Volume</u>			
<u>Net weight</u>			
<u>Gross weight</u>			
<u>Bar code</u>	3334493361759		



Flexipan mould tray 60x40 120 chocolate mini-ingots 4.5x1.5 cm

336175

Product dimensions		Product with unit(s)	
Useful length	600 mm	Item type	mini-ingot
Material		Number of elements	120
Main material	Silicon	Element height	11 mm
Color & Finish		Element Length	40 mm
Colour	Grey	Element width	15 mm
Use conditions			
Minimum operating temperature	-40 °C		
Maximum operating temperature	260 °C		

LOGISTICS DATA

Quantity	UNIT		SUB-CONDITIONING		MASTER		PALLET	
			contains:		contains:		contains:	
					1	underpacking	99999	masters
					1	unit(s)	99999	layers
							1	masters / layer
							99999	unit(s)
Weight	0,744	Net in kg		Net in kg	0,7	Net in kg	0	Net in kg
	0,744	Gross in kg		Gross in kg	0,7	Gross in kg	0	Gross in kg
	0,000	Net packing in kg		Net packing in kg	0,0	Net packing in kg	0	Net packing in kg
Dimensions	1,200	H in cm		H in cm	1,2	H in cm	0	H in cm
	44,500	W in cm		W in cm	44,5	W in cm	0	W in cm
	68,400	L in cm		L in cm	68,4	L in cm	0	L in cm
	3,650	V in dm³		V in dm³	3,7	V in dm³	0	V in dm³
Bar code	type	EAN	type	EAN	type	EAN	type	EAN
	EAN13	3334493361759						