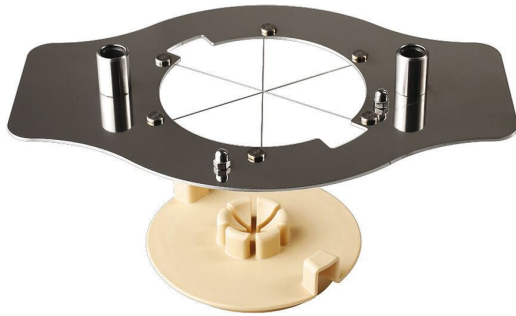




Prep Chef egg slicer 6 wedges

215836

PRODUCT SHEET



Material(s):

Stainless steel

Country of origin:

FRANCE

Customs number:

7323930090

Brand:

MATFER



PRODUCT DESCRIPTION

- ✓ Stainless steel
- ✓ Clean and easy cutting, stainless steel wires
- ✓ 6-wedge divider
- ✓ Perfect presentation & optimal conservation guarantee
- ✓ Accessory adapting to Prep Chef and Prep Chef Compact set base (remove springs before use)

SALES DATA

Sales unit:

1

MOQ:

1

PRODUCT FEATURES

Dimensions Commercial Variant

	Commercial version CV 1	Commercial version CV -1	Commercial version CV -2
<u>Designation</u>	Prep Chef egg slicer 6 wedges		
Contains		VC-1	VC-2
Height			
Total Length			
Width			
Volume			
Net weight			
Gross weight			
Bar code	3334492158367		

	Material	Color & Finish
Main material	Stainless steel	Colour Stainless steel



Prep Chef egg slicer 6 wedges

215836

LOGISTICS DATA

	UNIT		SUB-CODITIONING		MASTER		PALLET	
Quantity			contains:		contains: 1	underpacking	contains: 55	masters
					contains: 1	unit(s)	contains: 55	layers
							contains: 1	masters / layer
							contains: 55	unit(s)
Weight	0,680	Net in kg		Net in kg	0,7	Net in kg	37	Net in kg
	0,680	Gross in kg		Gross in kg	0,7	Gross in kg	37	Gross in kg
	0,000	Net packing in kg		Net packing in kg	0,0	Net packing in kg	0	Net packing in kg
Dimensions	8,000	H in cm		H in cm	8,0	H in cm	55	H in cm
	20,000	W in cm		W in cm	20,0	W in cm	80	W in cm
	28,000	L in cm		L in cm	28,0	L in cm	120	L in cm
	4,480	V in dm³		V in dm³	4,5	V in dm³	528	V in dm³
Bar code	type	EAN	type	EAN	type	EAN	type	EAN
	EAN13	3334492158367						